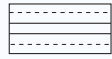
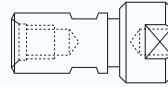


Spareparts

10



BUSHINGS
Page 10.03



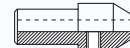
**COLLET CHUCKS WITH
SPRING COLLETS 6 - 8 - 9,5**
Page 10.03



SETTING RINGS
Page 10.03



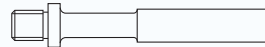
DRILL HOLDER-SLEEVE
Page 10.03



DRILL HOLDERS
Page 10.04



EXTENSION SHAFTS
Page 10.04



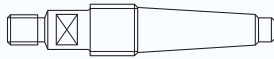
EXTENSION SHAFTS
Page 10.04



**SHAFT ADAPTERS Ø10 FOR
BORING MACHINES**
Page 10.04



**SHAFT ADAPTERS
FOR PORTABLE ROUTERS**
Page 10.04



SHAFT ADAPTERS MK2
Page 10.05



ADAPTERS OR EXTENSION SHAFTS
Page 10.05



BALL BEARINGS
Page 10.05



"DELRIN" BALL BEARINGS
Page 10.05



CHEESE HEAD SCREWS
Page 10.06



SLOTTED CHEESE HEAD SCREWS
Page 10.06



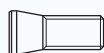
COUNTERSUNK HEAD SCREWS
Page 10.06



SET SCREWS
Page 10.06



ROUNDED HEAD SCREWS
Page 10.06



**HEXAGON SOCKET SET SCREWS
FOR WEDGES**
Page 10.07

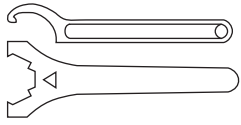


ALLEN KEYS
Page 10.07

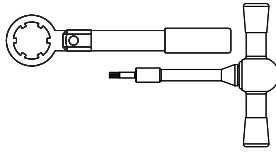


TORX KEYS
Page 10.07

Klein®



WRENCHES
Page 10.07



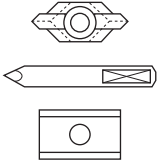
TORQUE WRENCHES
Page 10.08 - 10.09



WASHERS
Page 10.10



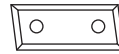
SPRING WASHERS
Page 10.10



KNIVES
Page 10.10



HW "VERSOFIX" KNIVES
Page 10.10



HW KNIVES
Page 10.10



HW KNIVES
Page 10.11



WEDGES
Page 10.12



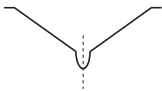
SPACERS
Page 10.12



LOCK RING
Page 10.12



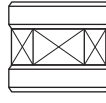
O-RING
Page 10.12



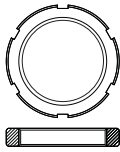
SPRINGS
Page 10.12



THREADED RINGS
Page 10.12



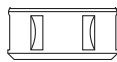
THREADED NUTS FOR MK2 SHANKS
Page 10.13



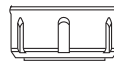
COLLET NUTS
Page 10.13



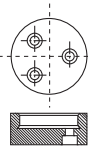
"NO-NOISE" COLLET NUTS
Page 10.13



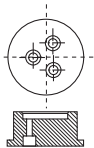
COLLET NUTS
Page 10.13



COLLET NUTS WITH BALL BEARINGS
Page 10.13



END CAPS
Page 10.14



FIXING FLANGE FOR ART. T132.350.NS
Page 10.14



REDUCTION RINGS FOR SAWBLADES
Page 10.14



REDUCTION RINGS FOR CUTTERHEADS
Page 10.15



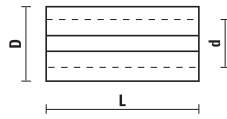
REDUCING BUSHES
Page 10.15



SPACERS AND SPACERS SET
Page 10.16

BUSHINGS

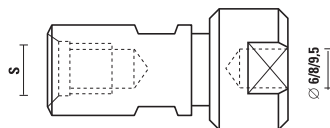
ART. Z001



| Item | D | d | L |
|------------|------|-----|----|
| Z001.001.N | 8 | 6 | 25 |
| Z001.002.N | 9,5 | 6 | 25 |
| Z001.003.N | 9,5 | 8 | 25 |
| Z001.004.N | 10 | 8 | 25 |
| Z001.005.N | 12 | 8 | 25 |
| Z001.006.N | 12 | 6 | 25 |
| Z001.007.N | 12 | 10 | 25 |
| Z001.008.N | 16 | 13 | 40 |
| Z001.009.N | 8 | 6,4 | 25 |
| Z001.010.N | 12 | 9,5 | 25 |
| Z001.011.N | 10 | 6 | 25 |
| Z001.012.N | 8 | 5 | 25 |
| Z001.013.N | 8 | 4 | 25 |
| Z001.014.N | 8 | 3 | 25 |
| Z001.015.N | 10 | 5 | 25 |
| Z001.016.N | 10 | 4 | 25 |
| Z001.017.N | 9,5 | 6,4 | 25 |
| Z001.018.N | 12,7 | 9,5 | 25 |
| Z001.019.N | 12,7 | 8 | 25 |
| Z001.020.N | 12,7 | 6,4 | 25 |

COLLET CHUCKS WITH SPRING COLLETS 6 - 8 - 9,5

ART. Z002



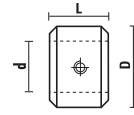
Supplied with nr 3 spring collets Ø6 - Ø8 - Ø9,5

| Item | S |
|------------|----------------------------------|
| Z002.001.R | M12x1 (kit with spring collet) |
| Z002.002.R | M10x1,5 (kit with spring collet) |

| Spare parts | |
|----------------------------------|--------------------|
| Z002.101.R chuck without collets | M12x1 |
| Z002.102.R chuck without collets | M10x1,5 |
| Z002.160.R | spring collet Ø6 |
| Z002.180.R | spring collet Ø8 |
| Z002.195.R | spring collet Ø9,5 |

SETTING RINGS

ART. Z003



- Rings for setting the drilling depth use when working with manual feed
- Used with Art. R101 - R201 - R 205

| Item | d | D | L |
|------------|----|----|----|
| Z003.050.N | 5 | 16 | 10 |
| Z003.060.N | 6 | 16 | 10 |
| Z003.070.N | 7 | 18 | 10 |
| Z003.080.N | 8 | 18 | 10 |
| Z003.090.N | 9 | 20 | 10 |
| Z003.100.N | 10 | 20 | 10 |
| Z003.120.N | 12 | 22 | 10 |



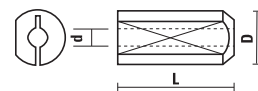
Z051.301.R



Z052.006.N

DRILL HOLDER-SLEEVE

ART. Z010



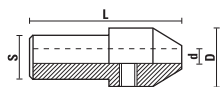
Used with Art. L120



| Item | d | D | L |
|------------|-----|----|----|
| Z010.020.N | 2 | 10 | 24 |
| Z010.025.N | 2,5 | 10 | 24 |
| Z010.030.N | 3 | 10 | 24 |
| Z010.032.N | 3,2 | 10 | 24 |
| Z010.035.N | 3,5 | 10 | 24 |
| Z010.040.N | 4 | 10 | 24 |
| Z010.045.N | 4,5 | 10 | 24 |
| Z010.050.N | 5 | 10 | 24 |
| Z010.060.N | 6 | 10 | 24 |

DRILL HOLDERS

ART. Z011



Used with Art. L120



| Item | d | D | L | S |
|------------|-----|----|----|-------|
| Z011.020.N | 2 | 15 | 35 | 10x19 |
| Z011.025.N | 2,5 | 15 | 35 | 10x19 |
| Z011.030.N | 3 | 15 | 35 | 10x19 |
| Z011.032.N | 3,2 | 15 | 35 | 10x19 |
| Z011.035.N | 3,5 | 15 | 35 | 10x19 |
| Z011.040.N | 4 | 15 | 35 | 10x19 |
| Z011.045.N | 4,5 | 15 | 35 | 10x19 |
| Z011.050.N | 5 | 15 | 35 | 10x19 |
| Z011.060.N | 6 | 15 | 35 | 10x19 |



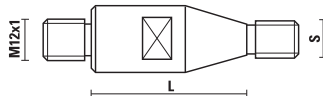
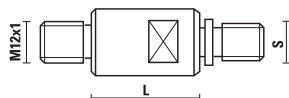
Z051.311.R



Z052.102.N

EXTENSION SHAFTS

ART. Z021

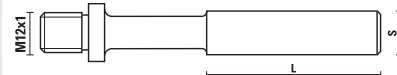


Used with Art. R130

| RH rotation | LH rotation | S | L |
|-------------|-------------|---------|----|
| Z021.025.R | Z021.025.L | M10/11 | 25 |
| Z021.035.R | Z021.035.L | M10/11 | 35 |
| Z021.045.R | Z021.045.L | M10/11 | 45 |
| Z021.125.R | Z021.125.L | M10/30° | 25 |
| Z021.135.R | Z021.135.L | M10/30° | 35 |
| Z021.145.R | Z021.145.L | M10/30° | 45 |

EXTENSION SHAFTS

ART. Z021

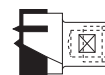
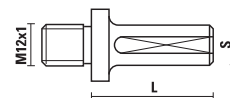


Used with Art. R130 and
Art. F101 - F102 - F104 - F105 - F201 - F203 - F204

| RH rotation | LH rotation | S | L |
|-------------|-------------|----|----|
| Z021.213.R | Z021.213.L | 13 | 50 |
| Z021.216.R | Z021.216.L | 16 | 50 |

SHAFT ADAPTERS Ø10 FOR BORING MACHINES

ART. Z021

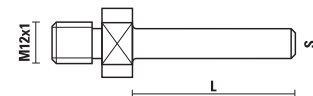


Used with Art. R130

| RH rotation | LH rotation | S | L |
|-------------|-------------|----|----|
| Z021.310.R | Z021.310.L | 10 | 27 |
| Z021.311.R | Z021.311.L | 10 | 40 |
| Z021.312.R | Z021.312.L | 10 | 47 |

SHAFT ADAPTERS FOR PORTABLE ROUTERS

ART. Z021

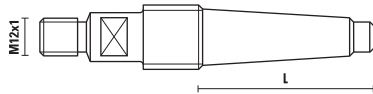


Used with Art. R130
and Art. F101 - F102 - F104 - F105 - F201 - F203 - F204

| RH rotation | S | L |
|-------------|-----|----|
| Z021.406.R | 6 | 40 |
| Z021.408.R | 8 | 40 |
| Z021.409.R | 9,5 | 40 |
| Z021.410.R | 10 | 40 |
| Z021.412.R | 12 | 40 |

SHAFT ADAPTERS MK2

ART. Z021

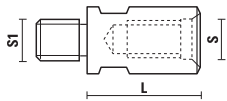


Used with Art. R130

| RH rotation | S | L |
|-------------|---------|----|
| Z021.500.R | MK2/M20 | 67 |

ADAPTERS OR EXTENSION SHAFTS

ART. Z021

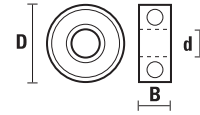


Used with Art. R130
and Art. F101 - F102 - F104 - F105 - F201 - F202 - F203 - F204

| RH rotation | S | S1 | L |
|-------------|---------|---------|----|
| Z021.600.R | M12x1 | M12x1 | 25 |
| Z021.601.R | M12x1 | M10x1,5 | 25 |
| Z021.610.R | M10x1,5 | M12x1 | 25 |
| Z021.611.R | M10x1,5 | M10x1,5 | 25 |

BALL BEARINGS

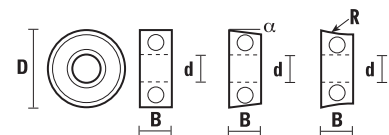
ART. Z050



| Item | D | d | B |
|------------|------|------|-----|
| Z050.001.N | 9,5 | 3,2 | 4 |
| Z050.002.N | 9,5 | 4,8 | 3,2 |
| Z050.003.N | 12,7 | 4,8 | 5 |
| Z050.004.N | 16 | 5 | 5 |
| Z050.005.N | 19 | 6,4 | 7,1 |
| Z050.006.N | 19 | 6 | 6 |
| Z050.007.N | 12,7 | 6,4 | 4,7 |
| Z050.008.N | 22 | 8 | 7 |
| Z050.009.N | 25,4 | 15 | 5,5 |
| Z050.010.N | 28 | 8 | 9 |
| Z050.011.N | 15,8 | 6,4 | 5 |
| Z050.012.N | 19 | 12,7 | 4 |
| Z050.013.N | 38 | 15 | 8,5 |
| Z050.014.N | 35 | 15 | 11 |
| Z050.015.N | 28,6 | 12,7 | 8 |
| Z050.016.N | 33,5 | 8 | 8,6 |
| Z050.017.N | 6,4 | 3,2 | 2,8 |
| Z050.018.N | 16 | 8 | 5 |
| Z050.019.N | 14 | 8 | 4 |
| Z050.022.N | 16 | 4,8 | 5 |
| Z050.023.N | 19 | 4,8 | 5 |
| Z050.024.N | 19 | 5 | 5 |

"DELRIN®" BALL BEARINGS

ART. Z050

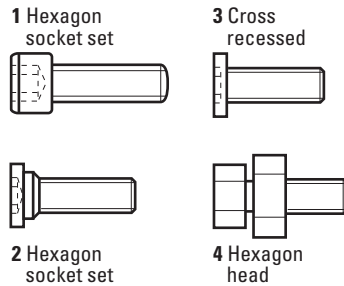


Used for working solid surface (CORIAN®)

| Item | D | d | B | α | R |
|------------|------|-----|-----|-----|--------|
| Z050.100.N | 12,7 | 4,8 | 3,2 | 0° | |
| Z050.101.N | 19 | 6,4 | 5 | 0° | |
| Z050.102.N | 21,8 | 6,4 | 5 | 10° | |
| Z050.103.N | 22,2 | 6,4 | 5 | 5° | |
| Z050.104.N | 28,6 | 15 | 7 | 0° | |
| Z050.105.N | 19 | 6,4 | 6,4 | | R=12,7 |
| Z050.106.N | 25,4 | 6,4 | 7 | 5° | |
| Z050.107.N | 28 | 8 | 8,5 | 0° | |
| Z050.108.N | 29 | 8 | 8,5 | 0° | |
| Z050.109.N | 34 | 8 | 8,5 | 0° | |
| Z050.110.N | 22 | 6 | 7 | 11° | |
| Z050.111.N | 19 | 6 | 7 | 0° | |
| Z050.112.N | 28,6 | 7,9 | 7 | 0° | |

CHEESE HEAD SCREWS

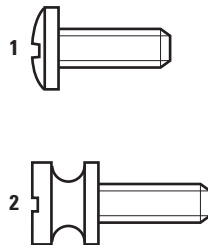
ART. Z051



| Item | Description | Draw. |
|-----------------------|---|-------|
| Z051.001.R | M 2,5x12 ch 1,9 | 1 |
| Z051.002.R | M 3,5x13 ch 2,4 | 1 |
| Z051.004.R | M 5x17 ch 4 | 1 |
| Z051.006.R | M 2,2x8 for art. A119.064.R | 3 |
| Z051.007.R | M 5x13 ch 3 for art. E316 | 2 |
| Z051.008.R | M 3x12 ch 2,4 | 1 |
| Z051.012.R | M 5x16 ch 4 for art. R110.600.R | 1 |
| Z051.013.R | M 6,3x19 ch 4,7 for art. R110.800.R | 1 |
| Z051.016.R | M 6x25 ch 5 for art. T128 cutter arbors | 1 |
| Z051.050.R | anti dust set for art. WE178 | |
| Z051.312.R | M 5x10 for NOVASYSTEM | 1 |
| Z051.401.R | M 8x10 | 1 |
| Z051.506.R NEW | M 8x30 hex socket 13 complete with hexagon nut for art. T128.140.R | 4 |

SLOTTED CHEESE HEAD SCREWS

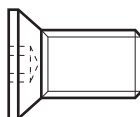
ART. Z051



| Item | Description | Draw. |
|------------|---------------------------------|-------|
| Z051.501.R | M 3x4 for spare knife art. WC | 1 |
| Z051.503.R | M 3x10 for ball bearing art. WC | 1 |
| Z051.505.R | M 5x17 for machines Weeke | 2 |

COUNTERSUNK HEAD SCREWS

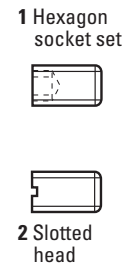
ART. Z051



| Item | Description |
|------------|--|
| Z051.011.R | M 4x8 Torx T15 |
| Z051.014.R | M 6x10 for art. T128.140.R slotted head |
| Z051.015.R | M 5x15 ch 3 for art. A/B/C/E/G - 117.280.R |
| Z051.307.R | M 5x6 |
| Z051.309.R | M 3x6 Torx T9 |
| Z051.310.R | M 3x8 Torx T9 |
| Z051.315.R | M 4x6,5 Torx T9 |
| Z051.403.R | M 5x6 Torx T20 |
| Z051.405.R | M 5x15 ch 2,5 |
| Z051.700.R | M 4x3,2 Torx T15 |
| Z051.701.R | M 5x7 Torx T15 |

SET SCREWS

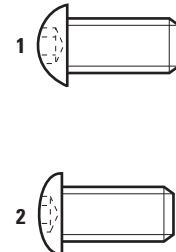
ART. Z051



| Item | Description | Draw. |
|------------|---|-------|
| Z051.005.R | M 3x2,5 ch 1,6 with flat point | 1 |
| Z051.101.R | M 2,5x2,5 ch 1,3 with flat point | 1 |
| Z051.102.R | M 4x4 ch 2 with flat point | 1 |
| Z051.300.R | M 6x6 ch 3 with flat point for L130 D=Ø8÷12 | 1 |
| Z051.301.R | M 5x5 ch 2,5 with flat point | 1 |
| Z051.302.R | M 5x10 | 2 |
| Z051.303.R | M 5x6 ch 2,5 with cone point for art. L130 D=Ø4÷8 | 1 |
| Z051.304.R | M 6x6 ch 3 with flat point for art. L131 D=Ø12 | 1 |
| Z051.306.R | M 5x6 ch 2,5 with cone point | 1 |
| Z051.311.R | M 4x5 ch 2 with flat point for art. Z011 | 1 |
| Z051.313.R | M 5x4 ch 2,5 with flat point | 1 |
| Z051.314.R | M 6x5 ch 3 with flat point for art. L131 D=Ø10 | 1 |
| Z051.321.R | M 3x5 ch 1,6 | 1 |
| Z051.404.R | M 3x6 ch 1,5 with cone point for art. W182 | 1 |
| Z051.407.R | M 6x10 ch 3 | 1 |
| Z051.704.R | M 8x12 ch 4 with cyl point for art. SA | 1 |
| Z051.705.R | M 8x16 ch 4 with cyl point for art. SA | 1 |

ROUNDED HEAD SCREWS

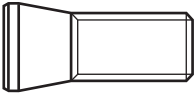
ART. Z051



| Item | Description | Draw. |
|------------|-------------------------------|-------|
| Z051.010.R | M 4x8 - Ø9 - T15 | 1 |
| Z051.201.R | M 4x9 - Ø7,8 - T15 | 1 |
| Z051.210.R | M 3,5x7 - Ø7,8 - T15 | 2 |
| Z051.211.R | M 3,5x7 - Ø9 - T15 | 1 |
| Z051.308.R | M 3x6 - T9 - Ø5,5 | 1 |
| Z051.320.R | M 3x4 | 1 |
| Z051.400.R | M 4x6 for art. W178 - Ø8 | 1 |
| Z051.402.R | M 4x8 for art. W171/W176 - Ø9 | 1 |
| Z051.406.R | M 4x3,2 for art. W182 | 1 |
| Z051.702.R | M 5x10 for art. TTL | 1 |

HEXAGON SOCKET SET SCREWS FOR WEDGES

ART. Z051



| Item | Description | For item |
|------------|-------------|----------|
| Z051.800.R | M 5x18 | TA/TB/TC |
| Z051.801.R | M 7x21 | TB |
| Z051.802.R | M 8x21 | THL |
| Z051.803.R | M 6x10 | TI 120 |
| Z051.804.R | M 6x12 | TI 160 |
| Z051.805.R | M 8x20 | TLL |
| Z051.807.R | M 6x20 | TYL |
| Z051.808.R | M 6x25 | TWL |
| Z051.809.R | M 8x18 | TZA |
| Z051.810.R | M 8x16 | TEL |

ALLEN KEYS

ART. Z052



| Item | Description |
|------------|-----------------------------|
| Z052.001.N | ch 1,9 |
| Z052.002.N | ch 2,4 |
| Z052.003.N | ch 4 |
| Z052.005.N | ch 1,6 |
| Z052.006.N | ch 2,5 for art. L001.100L/R |
| Z052.007.N | ch 1,5 |
| Z052.013.N | ch 4,7 for art. R110.800.R |
| Z052.101.N | ch 1,3 |
| Z052.102.N | ch 2 |
| Z052.103.N | ch 3 for art. W168 |
| Z052.104.N | ch 4 for art. W168 |
| Z052.406.N | ch 3 for art. SB080 |

TORX KEYS

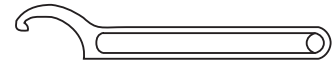
ART. Z052



| Item | Description |
|------------|-------------|
| Z052.004.N | Torx T10 |
| Z052.201.N | Torx T15 |
| Z052.302.N | Torx T9 |

WRENCHES

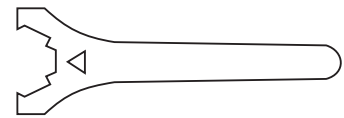
ART. Z052



| Item | Description |
|-----------------------|---|
| Z052.300.N NEW | Wrench 34/38 for collet nut DIN6388/EOC12 |
| Z052.301.N | Wrench 40/42 for art. Z091.000.R |
| Z052.310.N | Wrench 58/62 for collet nut DIN6388/EOC25 |

WRENCHES FOR COLLET NUT "STANDARD"

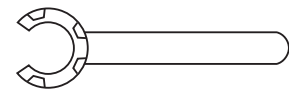
ART. Z052



| Item | Description |
|------------|---|
| Z052.401.N | Wrench for collet nut ER 32 "standard" type |
| Z052.402.N | Wrench for collet nut ER 40 "standard" type |
| Z052.404.N | Wrench for collet nut ER 20 "standard" type |
| Z052.407.N | Wrench for collet nut ER 25 "standard" type |
| Z052.409.N | Wrench for collet nut ER 16 "standard" type |

WRENCHES FOR COLLET NUT "MINI"

ART. Z052



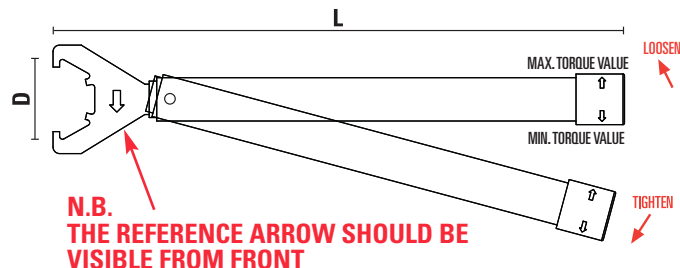
| Item | Description |
|------------|---|
| Z052.503.N | Wrench for collet nut ER 25 "mini" type |
| Z052.505.N | Wrench for collet nut ER 16 "mini" type |
| Z052.508.N | Wrench for collet nut ER 20 "mini" type |
| Z052.511.N | Wrench for collet nut ER 11 "mini" type |

TORQUE WRENCHES

While setting a tool it is extremely important to tighten it properly.

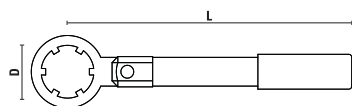
If not effectively tight indeed a cutting tool could slide away from the tool holder during the working process. On the other side, an excessive tightening can cause damages to the tool holder or spring collet or the tool itself.

The wrench indicates when the torque (Nm) is reached according to the value indicated.



TORQUE WRENCHES FOR "MINI" NUTS

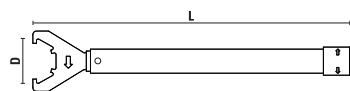
ART. Z052




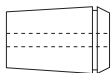
| Item | D | L | Nm | Threaded nut |
|------------|----|-----|----|--------------|
| Z052.701.N | 16 | 120 | 18 | ER11 |
| Z052.702.N | 22 | 175 | 28 | ER16 |
| Z052.703.N | 28 | 180 | 35 | ER20 |
| Z052.704.N | 35 | 185 | 40 | ER25 |

TORQUE WRENCHES FOR "STANDARD" NUTS

ART. Z052



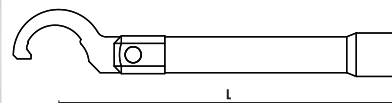
Dis ①  Collets as per drawing n. 1 must be tightened by setting the minimum torque value and rotating the handle counterclockwise.


Dis ②  Collets as per drawing n. 2 must be tightened by setting the maximum torque value and rotating the handle clockwise.


| Item | D | L | Nm (Dr. 1) | Nm (Dr. 2) | Threaded nut |
|------------|----|-----|------------|------------|--------------|
| Z052.710.N | 32 | 380 | 25-35 | 45-55 | ER16 |
| Z052.711.N | 35 | 380 | 30-20 | 60-70 | ER20 |
| Z052.712.N | 40 | 400 | 40-55 | 80-90 | ER25 |
| Z052.713.N | 50 | 400 | 66-70 | 120-130 | ER32 |
| Z052.714.N | 63 | 450 | 110-120 | 190-200 | ER40 |

TORQUE HOOK WRENCHES

ART. Z052



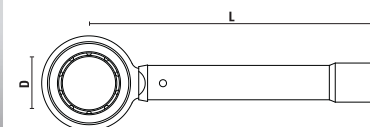
Dis ①  Collets as per drawing n. 1 must be tightened by setting the minimum torque value and rotating the handle counterclockwise.

Dis ②  Collets as per drawing n. 2 must be tightened by setting the maximum torque value and rotating the handle clockwise.

| Item | D | L | Nm (Dr. 1) | Nm (Dr. 2) | Threaded nut |
|------------|-------|-----|------------|------------|--------------|
| Z052.732.N | 58-62 | 380 | 110-120 | 190-200 | DIN6388 |

TORQUE WRENCHES FOR "NO-NOISE" NUTS

ART. Z052

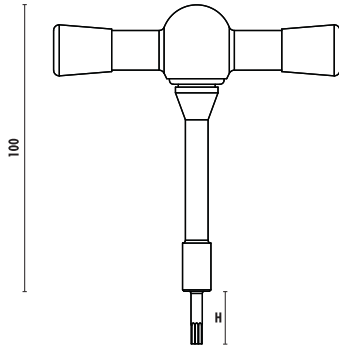


| Item | D | L | Nm (dis. 1) | Nm (dis. 2) | Threaded nut |
|-----------------------|----|-----|-------------|-------------|----------------|
| Z052.790.N NEW | 32 | 400 | 25-35 | 45-55 | ER 16 |
| Z052.793.N NEW | 50 | 400 | 65-70 | 120-130 | ER 32 |
| Z052.795.N NEW | 60 | 400 | 110-120 | 190-200 | DIN 6388/EOC25 |

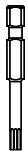
While tightening with constant action a strong shot is perceived both mechanically and acoustically. This indicates that the set torque is reached.

TORQUE WRENCHES FOR "TORX" SCREWS

ART. Z052



H=50 Spare bits



H=25



Supplied with H=25

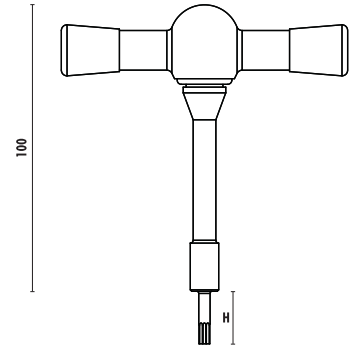
| Item | Torx | Nm |
|------------|------|-----|
| Z052.748.N | T6 | 0,6 |
| Z052.749.N | T7 | 0,9 |
| Z052.750.N | T8 | 1,2 |
| Z052.751.N | T9 | 1,4 |
| Z052.752.N | T10 | 2 |
| Z052.753.N | T15 | 3 |
| Z052.754.N | T20 | 5 |
| Z052.755.N | T25 | 7,2 |

| Spare parts | Torx | H |
|----------------|------|----|
| Z052.748.NCH25 | T6 | 25 |
| Z052.749.NCH25 | T7 | 25 |
| Z052.750.NCH25 | T8 | 25 |
| Z052.750.NCH50 | T8 | 50 |
| Z052.751.NCH25 | T9 | 25 |
| Z052.751.NCH50 | T9 | 50 |
| Z052.752.NCH25 | T10 | 25 |
| Z052.752.NCH50 | T10 | 50 |
| Z052.753.NCH25 | T15 | 25 |
| Z052.753.NCH50 | T15 | 50 |
| Z052.754.NCH25 | T20 | 25 |
| Z052.754.NCH50 | T20 | 50 |
| Z052.755.NCH25 | T25 | 25 |
| Z052.755.NCH50 | T25 | 50 |

Insert bits in 5 pieces box

TORQUE WRENCHES FOR "HEX" SCREWS

ART. Z052



Spare bits

H=25



Supplied with H=25

| ITEM | Socket size | Nm | Used on screw |
|------------|-------------|------|---------------|
| Z052.771.N | 1,3 | 0,10 | Z051.101.R |
| Z052.772.N | 1,5 | 0,12 | Z051.404.R |
| Z052.773.N | 2 | 0,50 | Z051.001.R |
| Z052.774.N | 2,4 | 0,76 | Z051.002.R |
| Z052.775.N | 4 | 3,10 | Z051.004.R |
| Z052.776.N | 5 | 5,00 | Z051.016.R |
| Z052.785.N | 1,6 | 3,00 | Z051.005.R |
| Z052.786.N | 2,5 | 5,00 | Z051.301.R |
| Z052.787.N | 3 | 7,00 | Z051.314.R |

| Spare parts | Socket size |
|----------------|-------------|
| Z052.771.NCH25 | 1,3 |
| Z052.772.NCH25 | 1,5 |
| Z052.773.NCH25 | 2 |
| Z052.774.NCH25 | 2,4 |
| Z052.775.NCH25 | 4 |
| Z052.776.NCH25 | 5 |
| Z052.785.NCH25 | 1,6 |
| Z052.786.NCH25 | 2,5 |
| Z052.787.NCH25 | 3 |

Insert bits in 5 pieces box

WASHERS

ART. Z053



| Item | D | d |
|------------|------|-----|
| Z053.001.N | 9,5 | 3,2 |
| Z053.002.N | 8 | 4,8 |
| Z053.003.N | 12,7 | 4,8 |
| Z053.004.N | 16 | 5 |
| Z053.010.N | 9,5 | 6,4 |

SPRING WASHERS

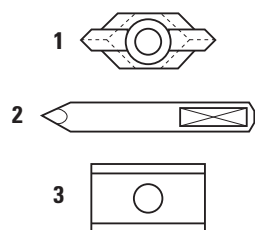
ART. Z054



| Item | D | d |
|------------|-----|-----|
| Z054.001.N | 6 | 2,5 |
| Z054.002.N | 7,5 | 3,2 |
| Z054.003.N | 11 | 6,4 |
| Z054.410.N | 9,5 | 6,4 |

KNIVES

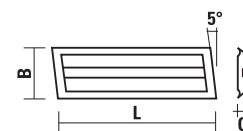
ART. Z055



| Item | Drawing | |
|------------|---------|------------------|
| Z055.100.N | 1 | spur |
| Z055.101.N | 2 | centerpoint |
| Z055.125.N | 3 | HW-knife for Ø25 |
| Z055.126.N | 3 | HW-knife for Ø26 |
| Z055.130.N | 3 | HW-knife for Ø30 |
| Z055.135.N | 3 | HW-knife for Ø35 |
| Z055.140.N | 3 | HW-knife for Ø40 |

HW "VERSOFIX" KNIVES

ART. Z055

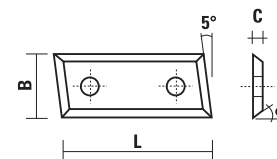


- HW-knife "Kawedur"
- 4 cutting edges
- Spare parts for Art. W120÷W127

| Item | L | B | C |
|------------|----|-----|-----|
| Z055.220.N | 20 | 5,5 | 1,1 |
| Z055.221.N | 20 | 10 | 1,5 |
| Z055.230.N | 30 | 6,5 | 1,1 |
| Z055.231.N | 30 | 10 | 1,5 |
| Z055.250.N | 50 | 10 | 1,5 |

HW KNIVES

ART. Z055



- 4 cutting edges
- Spare parts for Art. W153 - W154 - W155 - W156

| Item | L | B | C |
|------------|----|----|-----|
| Z055.423.N | 30 | 9 | 1,5 |
| Z055.424.N | 40 | 9 | 1,5 |
| Z055.425.N | 50 | 9 | 1,5 |
| Z055.430.N | 30 | 12 | 1,5 |
| Z055.440.N | 40 | 12 | 1,5 |
| Z055.450.N | 50 | 12 | 1,5 |

HW KNIVES

ART. Z055

| Item | Description | For item |
|------------|---------------------------|----------------|
| Z055.300.N | 29,5x9x1,5 | WC101 |
| Z055.500.R | 50x5,5x1,1 | W174 - W175 |
| Z055.500.L | 50x5,5x1,1 Sx | W174 - W175 |
| Z055.501.N | 16x7x1,5 (1 chip breaker) | W172 - W173 |
| Z055.502.N | 16x7x1,5 (2 chip breaker) | W172 - W173 |
| Z055.503.N | 23x7x1,5 (1 chip breaker) | W172 - W173 |
| Z055.504.N | 23x7x1,5 (2 chip breaker) | W172 - W173 |
| Z055.505.N | 48x12x1,5 | W171.670.R |
| Z055.506.N | 27x9x1,5 | W170.210.R+260 |
| Z055.507.N | 28x12x1,5 | W170.380.R |
| Z055.516.N | 16x7x1,5 | W165 |
| Z055.528.N | 28x7x1,5 | W165 |
| Z055.529.N | 29,5x5,5x1,1 | WE101.120.R |
| Z055.520.N | R= 3 | WE152.250.R |
| Z055.521.N | R= 6 | WE152.280.R |
| Z055.522.N | R= 8 | WE152.320.R |
| Z055.523.N | R= 10 | WE152.360.R |
| Z055.550.N | R= 6 | WC111 |
| Z055.551.N | 20x9x1,5 | WC120 |
| Z055.552.N | 13,25x9x1,1 | WC121 |
| Z055.553.N | R= 3/45° | WC122 |
| Z055.554.N | R= 6 | WC123 |
| Z055.555.N | R= 6 | WC125 |
| Z055.556.N | R= 4,5 | WC129 |
| Z055.560.N | 33,3x18,5x2 | W178.860.R |
| Z055.561.N | 31x17x2 | W178.861.R |
| Z055.562.N | 32x20x1,5 | W178.862.R |
| Z055.569.N | 13,9x9,5x2 - R=8 | W178.999.R |
| Z055.571.N | 40x19x2 | WE180 |
| Z055.572.N | R= 6,4 | WE112 |
| Z055.573.N | R= 8 | WE112 |
| Z055.574.N | R= 9,5 | WE112 |
| Z055.575.N | R= 12,7 | WE112 |
| Z055.580.N | 30x23x2 | WE194 |
| Z055.581.N | 30x23x2 | WE194 |
| Z055.582.N | 30x23x2 | WE195 |
| Z055.583.N | 30x23x2 | WE195 |
| Z055.584.N | 30x23x2 | WE197 |
| Z055.585.N | 30x23x2 | WE197 |
| Z055.586.N | 30x23x2 | WE198 |
| Z055.587.N | 30x23x2 | WE198 |
| Z055.628.N | 40x28x1,5 | WE180 - W181 |
| Z055.641.N | Profile C1 - 45° | W162 |
| Z055.642.N | Profile C2 - R= 4/45° | W162 |
| Z055.643.N | Profile C3 - R= 1/11 | W162 |
| Z055.644.N | Profile C4 - R= 3° | W162 |
| Z055.645.N | Profile C5 - R= 8/30° | W162 |
| Z055.646.N | Profile C6 - R= 4/2 | W162 |
| Z055.647.N | Profile C7 - R= 12 | W162 |
| Z055.648.N | Profile C8 - R= 3/2 | W162 |
| Z055.649.N | Profile C9 - R= 2/10 | W162 |
| Z055.650.N | Profile C10 - R= 45°/2 | W162 |
| Z055.651.N | Profile B1 - R= 12x4 | W161 |
| Z055.652.N | Profile B2 - R= 12 | W161 |
| Z055.653.N | Profile B3 - R= 15 | W161 |
| Z055.654.N | Profile B4 - R= 3/R3 | W161 |
| Z055.655.N | Profile B5 - R= 26/5 | W161 |
| Z055.656.N | Profile B6 - R= 6/1,5 | W161 |

| Item | Item | Description | For item |
|------------|------------|-----------------------|-----------|
| Z055.661.N | | Profile A1 - R= 10/4 | W160 |
| Z055.662.N | | Profile A2 - R= 6/6 | W160 |
| Z055.663.N | | Profile A3 - R= 5/6 | W160 |
| Z055.664.N | | Profile A4 - R= 15/14 | W160 |
| Z055.665.N | | Profile A5 - R= 3/20° | W160 |
| Z055.666.N | | Profile A6 - R= 5/20° | W160 |
| Z055.800.R | Z055.800.L | R= 2/45° | TLL |
| Z055.801.R | Z055.801.L | R= 3/45° | TLL |
| Z055.802.R | Z055.802.L | R= 4/45° | TLL |
| Z055.803.R | Z055.803.L | R= 5/45° | TLL |
| Z055.804.R | Z055.804.L | R= 6/45° | TLL |
| Z055.805.R | | R= 3/6 | TML |
| Z055.806.R | | R= 4/8 | TML |
| Z055.807.R | | R= 5/10 | TML |
| Z055.808.R | | R= 12/18 | TML |
| Z055.809.R | | R= 15/20 | TML |
| Z055.810.R | | R= 4/4 | TNL |
| Z055.811.R | | R= 6/6 | TNL |
| Z055.812.R | | R= 8/8 | TNL |
| Z055.813.R | | R= 10/10 | TNL |
| Z055.814.R | | R= 12/12 | TNL |
| Z055.815.R | | R= 15/15 | TNL |
| Z055.830.R | | 45° | TSL |
| Z055.831.N | | Profile A | TTL |
| Z055.832.N | | Profile B | TTL |
| Z055.833.N | | Profile C | TTL |
| Z055.834.N | | Profile D | TTL |
| Z055.835.N | | Profile E | TTL |
| Z055.836.N | | Profile F | TTL |
| Z055.841.R | | Profile A | TVL |
| Z055.842.R | | Profile B | TVL |
| Z055.843.N | | Profile A | TWL |
| Z055.844.N | | Profile B | TWL |
| Z055.845.N | | Profile C | TWL |
| Z055.846.N | | Profile D | TWL |
| Z055.847.N | | Profile A4 | TZL |
| Z055.848.N | | Profile B4 | TZL |
| Z055.851.R | | Profile A1 | TYL |
| Z055.852.R | | Profile A2 | TYL |
| Z055.853.R | | Profile B1 | TYL |
| Z055.854.R | | Profile B2 | TYL |
| Z055.855.R | | Profile C1 | TYL |
| Z055.856.R | | Profile C2 | TYL |
| Z055.857.R | | Profile D1 | TYL |
| Z055.858.R | | Profile D2 | TYL |
| Z055.859.R | | Profile E1 | TYL |
| Z055.860.R | | Profile E2 | TYL |
| Z055.861.N | | Profile A1 | TS |
| Z055.862.N | | Profile B1 | TS |
| Z055.863.N | | Profile A2 | TS |
| Z055.864.N | | Profile B2 | TS |
| Z055.870.R | Z055.870.L | R= 3 | W184+W185 |
| Z055.871.R | Z055.871.L | R= 4 | W184+W185 |
| Z055.872.R | Z055.872.L | R= 5 | W184+W185 |
| Z055.873.R | Z055.873.L | R= 6 | W184+W185 |
| Z055.874.R | Z055.874.L | R= 8 | W184+W185 |
| Z055.875.R | Z055.875.L | R= 10 | W184+W185 |
| Z055.876.R | Z055.876.L | 45° | W184+W185 |

WEDGES

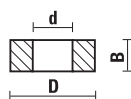
ART. Z056



| Item | Description | For item |
|------------|-----------------------------|-----------|
| Z056.100.N | 40x22,5x4 | W180 |
| Z056.101.N | 40x13,5x8 | W180/W181 |
| Z056.102.N | L= 6,5 | W182 |
| Z056.700.N | L= 6,8 | TA/TC |
| Z056.701.N | L= 14 | TB |
| Z056.702.N | L= 46 | TEL |
| Z056.703.N | L= 26 | TF |
| Z056.704.N | 45° | THL |
| Z056.705.N | L= 37 | TI |
| Z056.706.N | L= 47 | TI 160 |
| Z056.707.N | wedge | TLL |
| Z056.708.N | wedge | TLL |
| Z056.709.N | D= 112/113 | TML |
| Z056.710.N | D= 109/132 | TML |
| Z056.711.N | D= 122 | TNL |
| Z056.712.N | R= 8/9/10 | TOL |
| Z056.719.N | 45° | TSL |
| Z056.721.N | for profile A | TVL |
| Z056.722.N | for profile B | TVL |
| Z056.723.N | for profiles A/B/C/D | TWL |
| Z056.724.N | for profiles A1/B1/C1/D1/E1 | TYL |
| Z056.725.N | for profiles A2/B2/C2/D2/E2 | TYL |
| Z056.726.N | L= 46 | TS |
| Z056.760.N | L= 120 | TZA |
| Z056.761.N | L= 130 | TZA |
| Z056.762.N | L= 150 | TZA |
| Z056.763.N | L= 180 | TZA |
| Z056.764.N | L= 230 | TZA |
| Z056.765.N | L= 38 | W168 |
| Z056.790.N | 38x24x13 | SA |
| Z056.791.N | 38x15x16 | SA |
| Z056.800.N | wedges | TSL/THL |

SPACERS

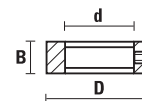
ART. Z057



| Item | D | d | B |
|------------|-----|------|------|
| Z057.001.N | 16 | 7,94 | 3,6 |
| Z057.002.N | 16 | 7,94 | 1 |
| Z057.003.N | 16 | 7,94 | 0,5 |
| Z057.004.N | 16 | 7,94 | 0,1 |
| Z057.005.N | 16 | 7,94 | 3 |
| Z057.006.N | 16 | 7,94 | 6 |
| Z057.007.N | 16 | 7,94 | 0,4 |
| Z057.008.N | 16 | 7,94 | 0,05 |
| Z057.009.N | 16 | 7,94 | 5,3 |
| Z057.010.N | 9,5 | 6,4 | 2,2 |
| Z057.101.N | 10 | 6 | 1 |
| Z057.102.N | 10 | 6 | 1,5 |
| Z057.103.N | 10 | 6 | 3 |

LOCK RING

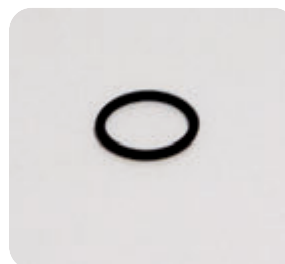
ART. Z058



| Item | D | d | B |
|------------|------|------|---|
| Z058.001.N | 11 | 6,4 | 5 |
| Z058.002.N | 18,2 | 12,7 | 6 |
| Z058.003.N | 20 | 12,7 | 6 |

O-RING

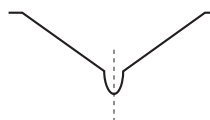
ART. Z059



| Item | D | Rotation |
|------------|-----|---------------------|
| Z059.001.L | 8,5 | Left (red color) |
| Z059.001.R | 8,5 | Right (black color) |

SPRINGS

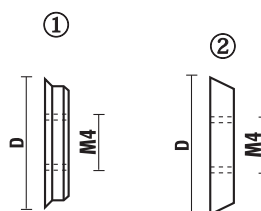
ART. Z060



| Item | Description | For item |
|------------|-------------|----------|
| Z060.100.N | 36x95 | TZA |

THREADED RINGS

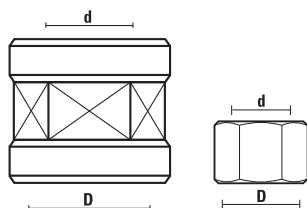
ART. Z060



| Item | Description | For item | Drawing |
|------------|--------------|----------|---------|
| Z060.700.R | thread M4/10 | TA | 1 |
| Z060.701.R | thread M4/12 | TA | 2 |
| Z060.750.N | thread M4/12 | W182 | 2 |
| Z060.751.N | thread M4/10 | W182 | 1 |

THREADED NUTS FOR MK2 SHANKS

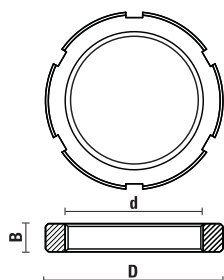
ART. Z090



| RH rotation | LH rotation | D | d | Wrench |
|-------------|-------------|------------|-----------|--------|
| Z090.001.R | Z090.001.L | M33x3 | ∅20/14x1" | 38 |
| Z090.002.R | Z090.002.L | M33x3 | M30x1,5 | 38 |
| Z090.011.R | | 1"1/8"x7G8 | ∅20/14x1" | 38 |
| Z090.012.R | Z090.012.L | 1"1/8"x7G9 | M30x1,5 | 38 |

COLLET NUTS

ART. Z091

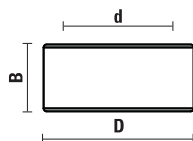


For Art. T118.953.R/T118.956.R/T118.959.R

| Item | D | B | d | Rotation |
|-----------------------|----|----|----------|----------|
| Z091.902.R NEW | 63 | 10 | M 50x1,5 | RH |

"NO-NOISE" COLLET NUTS

ART. Z091

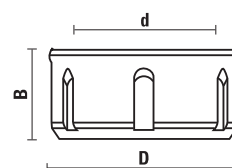


- Recommended when using router bits working at higher RPM
 - Threaded nut with ground contours, remarkable reduction of noise

| Item | Tipo | D | B | d | Rot. |
|-----------------------|-------------------|----|------|----------|------|
| Z091.501.R NEW | DIN 6499 (ER 32) | 50 | 23 | M 40x1,5 | RH |
| Z091.505.R NEW | DIN 6499 (ER 16) | 32 | 17,5 | M 22x1,5 | RH |
| Z091.522.R NEW | DIN 6499 (EOC 25) | 60 | 30 | M 48x2 | RH |

COLLET NUTS

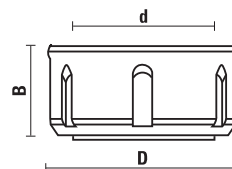
ART. Z091



| Item | | D | B | d | Rotation |
|-----------------------|------------------|----|------|-----------|----------|
| Z091.001.R | DIN 6499 (ER 32) | 50 | 23 | M 40x1,5 | RH |
| Z091.001.L | DIN 6499 (ER 32) | 50 | 23 | M 40x1,5 | LH |
| Z091.002.R | DIN 6499 (ER 40) | 63 | 25 | M 50x1,5 | RH |
| Z091.002.L | DIN 6499 (ER 40) | 63 | 25 | M 50x1,5 | LH |
| Z091.103.R | DIN 6499 (ER 25) | 42 | 20 | M 32x1,5 | RH |
| Z091.104.R | DIN 6499 (ER 20) | 35 | 19 | M 25x1,5 | RH |
| Z091.105.R | DIN 6499 (ER 16) | 32 | 17,5 | M 22x1,5 | RH |
| Z091.202.R | DIN 6388 (EOC25) | 60 | 30 | M 48x2 | RH |
| Z091.205.R NEW | DIN 6388 (EOC12) | 35 | 28 | M 27x1,5 | RH |
| Z091.301.R | ETS 32 | 50 | 23 | M 40x1,5 | RH |
| Z091.302.R | ETS 40 | 63 | 25 | M 50x1,5 | RH |
| Z091.403.R | ER 25 type mini | 35 | 20 | M 30x1 | RH |
| Z091.404.R | ER 20 type mini | 28 | 19 | M 24x1 | RH |
| Z091.405.R | ER 16 type mini | 22 | 18 | M 19x1 | RH |
| Z091.406.R | ER 11 type mini | 16 | 12 | M 13x0,75 | RH |

COLLET NUTS WITH BALL BEARINGS

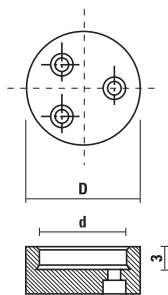
ART. Z091



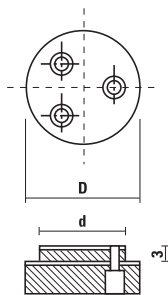
| Item | | D | B | d | Rotation |
|-----------------------|------------------|----|----|----------|----------|
| Z091.100.R NEW | DIN 6499 (ER 25) | 42 | 20 | M 32x1,5 | RH |
| Z091.101.R | DIN 6499 (ER 32) | 50 | 26 | M 40x1,5 | RH |
| Z091.102.R | DIN 6499 (ER 40) | 63 | 29 | M 50x1,5 | RH |
| Z091.203.R | DIN 6388 (EOC25) | 60 | 30 | M 48x2 | RH |

END CAPS

ART. Z092



Hollow end cap (FF)



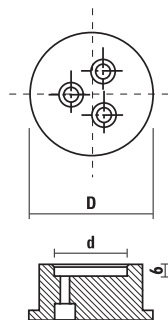
Extended end cap (FP)

Use on arbors Art. T128

| Item | d | D | Type |
|-----------------------|--------------|----|------|
| Z092.001.R | 30 | 40 | FF |
| Z092.002.R | 30 | 40 | FP |
| Z092.003.R NEW | 35 | 50 | FF |
| Z092.004.R NEW | 35 | 50 | FP |
| Z092.005.R NEW | 40 | 50 | FF |
| Z092.006.R NEW | 40 | 50 | FP |
| Z092.007.R NEW | 25,4 (1") | 50 | FF |
| Z092.008.R NEW | 25,4 (1") | 50 | FP |
| Z092.009.R NEW | 31,75 (1/4") | 50 | FF |
| Z092.010.R NEW | 31,75 (1/4") | 50 | FP |

FIXING FLANGE FOR ART. T132.350.NS

ART. Z092



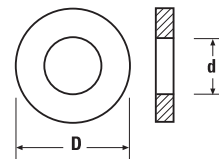
Hollow end cap (FF)

Use on arbors Art. T132.350.NS

| Item | d | D | Type |
|-----------------------|----|----|------|
| Z092.050.R NEW | 40 | 80 | FF |

REDUCTION RINGS FOR SAWBLADES

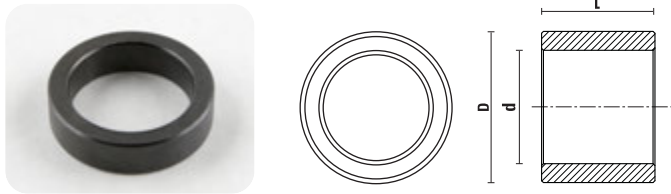
ART. ZA



| Item | D | d |
|--------------------------------|----|------|
| ZA000.02012 | 20 | 12,7 |
| ZA000.02014 Selling out | 20 | 13 |
| ZA000.02015 Selling out | 20 | 15 |
| ZA000.02016 | 20 | 16 |
| ZA000.03015 Selling out | 30 | 15 |
| ZA000.03016 | 30 | 16 |
| ZA000.03020 | 30 | 20 |
| ZA000.03025 | 30 | 25 |
| ZA000.03026 | 30 | 25,4 |
| ZA000.03028 Selling out | 30 | 28,6 |
| ZA000.03220 NEW | 32 | 20 |
| ZA000.03230 | 32 | 30 |
| ZA000.03516 NEW | 35 | 16 |
| ZA000.03520 NEW | 35 | 20 |
| ZA000.03526 NEW | 35 | 26 |
| ZA000.03530 | 35 | 30 |
| ZA000.03532 NEW | 35 | 32 |
| ZA000.04030 NEW | 40 | 30 |
| ZA000.04032 NEW | 40 | 32 |
| ZA000.04035 NEW | 40 | 35 |

REDUCTION RINGS FOR CUTTERHEADS

ART. ZA010



Tolerance:
 D= 0/- 0,02
 d= + 0,02/0
 L= ± 0,02

| Item | D | d | L |
|-------------------------|----|----|----|
| ZA010.322020 NEW | 32 | 20 | 20 |
| ZA010.353005 NEW | 35 | 30 | 5 |
| ZA010.353010 NEW | 35 | 30 | 10 |
| ZA010.353015 NEW | 35 | 30 | 15 |
| ZA010.353020 NEW | 35 | 30 | 20 |
| ZA010.353025 NEW | 35 | 30 | 25 |
| ZA010.353030 NEW | 35 | 30 | 30 |
| ZA010.353035 NEW | 35 | 30 | 35 |
| ZA010.353040 NEW | 35 | 30 | 40 |
| ZA010.403005 NEW | 40 | 30 | 5 |
| ZA010.403010 NEW | 40 | 30 | 10 |
| ZA010.403015 NEW | 40 | 30 | 15 |
| ZA010.403020 NEW | 40 | 30 | 20 |
| ZA010.403025 NEW | 40 | 30 | 25 |
| ZA010.403030 NEW | 40 | 30 | 30 |
| ZA010.403035 NEW | 40 | 30 | 35 |
| ZA010.403040 NEW | 40 | 30 | 40 |
| ZA010.403505 NEW | 40 | 35 | 5 |
| ZA010.403510 NEW | 40 | 35 | 10 |
| ZA010.403515 NEW | 40 | 35 | 15 |
| ZA010.403520 NEW | 40 | 35 | 20 |
| ZA010.403525 NEW | 40 | 35 | 25 |
| ZA010.403530 NEW | 40 | 35 | 30 |
| ZA010.403535 NEW | 40 | 35 | 35 |
| ZA010.403540 NEW | 40 | 35 | 40 |

REDUCING BUSHES

ART. ZA011

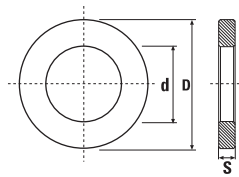
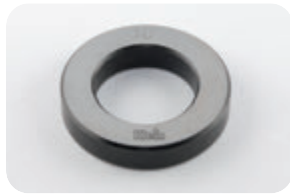


Tolerance:
 D= 0/- 0,02
 d= + 0,02/0

| Item | D | d | D2 |
|------------------------|----|----|----|
| ZA011.03530 NEW | 35 | 30 | 55 |
| ZA011.04030 NEW | 40 | 30 | 60 |
| ZA011.04035 NEW | 40 | 35 | 55 |
| ZA011.05030 NEW | 50 | 30 | 70 |
| ZA011.05035 NEW | 50 | 35 | 70 |
| ZA011.05040 NEW | 50 | 40 | 70 |

SPACERS

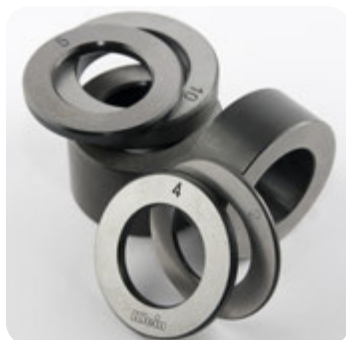
ART. YD300 - YD350 - YD400



- For arbors Art. T128 - Art. T130 - Art. T131 - Art. T132
- Burnished
- Spacer rings fine-blanking processed for thickness 0,1÷1 mm (tolerance ± 0,02)
- Spacer rings grinded on two sides for thickness 2÷50 mm (tolerance ± 0,01)

| Item | D | d | S |
|----------------------|----|----|-----|
| YD300.001 NEW | 30 | 50 | 0,1 |
| YD300.002 NEW | 30 | 50 | 0,2 |
| YD300.005 NEW | 30 | 50 | 0,5 |
| YD300.010 NEW | 30 | 50 | 1 |
| YD300.020 | 30 | 50 | 2 |
| YD300.030 | 30 | 50 | 3 |
| YD300.040 | 30 | 50 | 4 |
| YD300.050 | 30 | 50 | 5 |
| YD300.060 | 30 | 50 | 6 |
| YD300.080 | 30 | 50 | 8 |
| YD300.100 | 30 | 50 | 10 |
| YD300.120 | 30 | 50 | 12 |
| YD300.150 NEW | 30 | 50 | 15 |
| YD300.200 | 30 | 50 | 20 |
| YD300.250 | 30 | 50 | 25 |
| YD300.300 | 30 | 50 | 30 |
| YD300.400 NEW | 30 | 50 | 40 |
| YD300.500 NEW | 30 | 50 | 50 |
| | | | |
| YD350.001 NEW | 35 | 55 | 0,1 |
| YD350.002 NEW | 35 | 55 | 0,2 |
| YD350.005 NEW | 35 | 55 | 0,5 |
| YD350.010 NEW | 35 | 55 | 1 |
| YD350.020 | 35 | 55 | 2 |
| YD350.030 | 35 | 55 | 3 |
| YD350.040 | 35 | 55 | 4 |
| YD350.050 | 35 | 55 | 5 |
| YD350.060 | 35 | 55 | 6 |
| YD350.080 | 35 | 55 | 8 |
| YD350.100 | 35 | 55 | 10 |
| YD350.120 | 35 | 55 | 12 |
| YD350.150 NEW | 35 | 55 | 15 |
| YD350.200 | 35 | 55 | 20 |
| YD350.250 | 35 | 55 | 25 |
| YD350.300 | 35 | 55 | 30 |
| YD350.400 NEW | 35 | 55 | 40 |
| YD350.500 NEW | 35 | 55 | 50 |

| Item | D | D1 | S |
|----------------------|----|----|-----|
| YD400.001 NEW | 40 | 60 | 0,1 |
| YD400.002 NEW | 40 | 60 | 0,2 |
| YD400.005 NEW | 40 | 60 | 0,5 |
| YD400.010 NEW | 40 | 60 | 1 |
| YD400.020 | 40 | 60 | 2 |
| YD400.030 | 40 | 60 | 3 |
| YD400.040 | 40 | 60 | 4 |
| YD400.050 | 40 | 60 | 5 |
| YD400.060 | 40 | 60 | 6 |
| YD400.080 | 40 | 60 | 8 |
| YD400.100 | 40 | 60 | 10 |
| YD400.120 | 40 | 60 | 12 |
| YD400.150 NEW | 40 | 60 | 15 |
| YD400.200 | 40 | 60 | 20 |
| YD400.250 | 40 | 60 | 25 |
| YD400.300 | 40 | 60 | 30 |
| YD400.400 NEW | 40 | 60 | 40 |
| YD400.500 NEW | 40 | 60 | 50 |
| | | | |
| YD500.001 NEW | 50 | 70 | 0,1 |
| YD500.002 NEW | 50 | 70 | 0,2 |
| YD500.005 NEW | 50 | 70 | 0,5 |
| YD500.010 NEW | 50 | 70 | 1 |
| YD500.020 NEW | 50 | 70 | 2 |
| YD500.030 NEW | 50 | 70 | 3 |
| YD500.040 NEW | 50 | 70 | 4 |
| YD500.050 NEW | 50 | 70 | 5 |
| YD500.060 NEW | 50 | 70 | 6 |
| YD500.080 NEW | 50 | 70 | 8 |
| YD500.100 NEW | 50 | 70 | 10 |
| YD500.120 NEW | 50 | 70 | 12 |
| YD500.150 NEW | 50 | 70 | 15 |
| YD500.200 NEW | 50 | 70 | 20 |
| YD500.250 NEW | 50 | 70 | 25 |
| YD500.300 NEW | 50 | 70 | 30 |
| YD500.400 NEW | 50 | 70 | 40 |
| YD500.500 NEW | 50 | 70 | 50 |
| | | | |
| YD600.001 NEW | 60 | 80 | 0,1 |
| YD600.002 NEW | 60 | 80 | 0,2 |
| YD600.005 NEW | 60 | 80 | 0,5 |
| YD600.010 NEW | 60 | 80 | 1 |
| YD600.020 NEW | 60 | 80 | 2 |
| YD600.030 NEW | 60 | 80 | 3 |
| YD600.040 NEW | 60 | 80 | 4 |
| YD600.050 NEW | 60 | 80 | 5 |
| YD600.060 NEW | 60 | 80 | 6 |
| YD600.080 NEW | 60 | 80 | 8 |
| YD600.100 NEW | 60 | 80 | 10 |
| YD600.120 NEW | 60 | 80 | 12 |
| YD600.150 NEW | 60 | 80 | 15 |
| YD600.200 NEW | 60 | 80 | 20 |
| YD600.250 NEW | 60 | 80 | 25 |
| YD600.300 NEW | 60 | 80 | 30 |
| YD600.400 NEW | 60 | 80 | 40 |
| YD600.500 NEW | 60 | 80 | 50 |



SPACERS SET

ART. YD300 - YD350 - YD400 - YD500 - YD600

| Item | D | D1 |
|----------------------|----|----|
| YD300.990 | 30 | 50 |
| YD350.990 | 35 | 55 |
| YD400.990 | 40 | 60 |
| YD500.990 NEW | 50 | 70 |
| YD600.990 NEW | 60 | 80 |

Complete with:

- nr. 4 sp. 2 mm - nr. 3 sp. 4 mm - nr. 2 sp. 5 mm
- nr. 2 sp. 10 mm - nr. 1 sp. 20 mm - nr. 1 sp. 30 mm